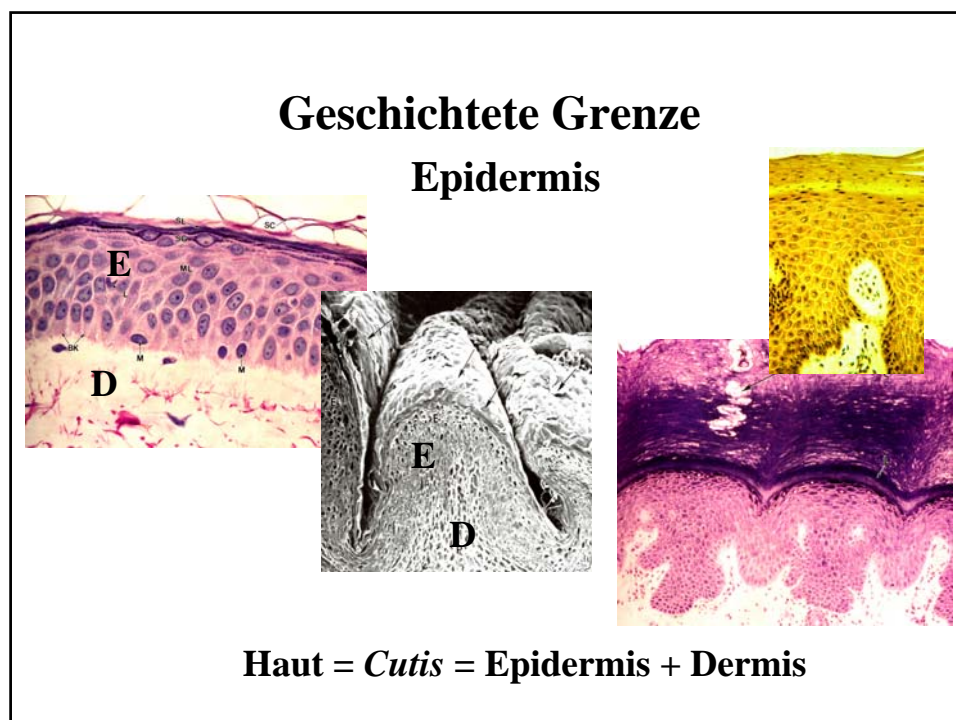
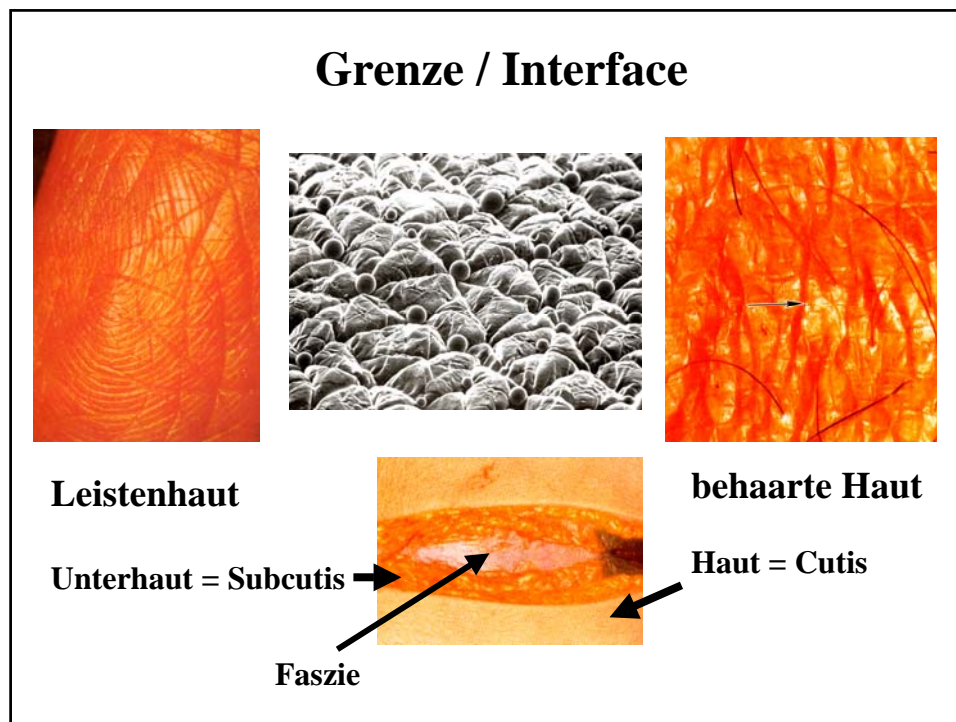


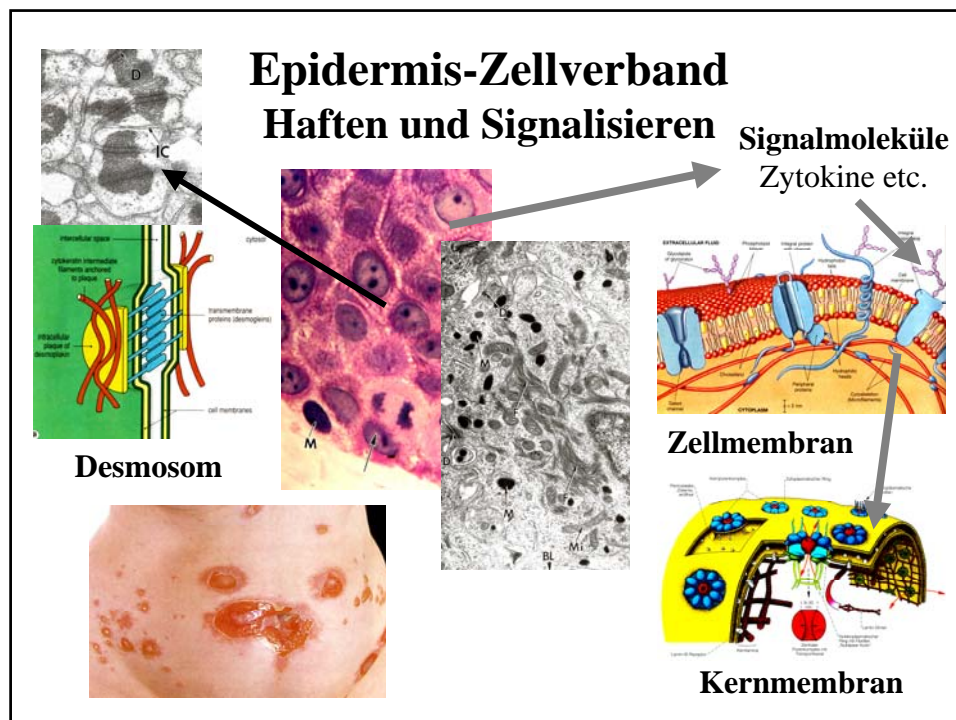
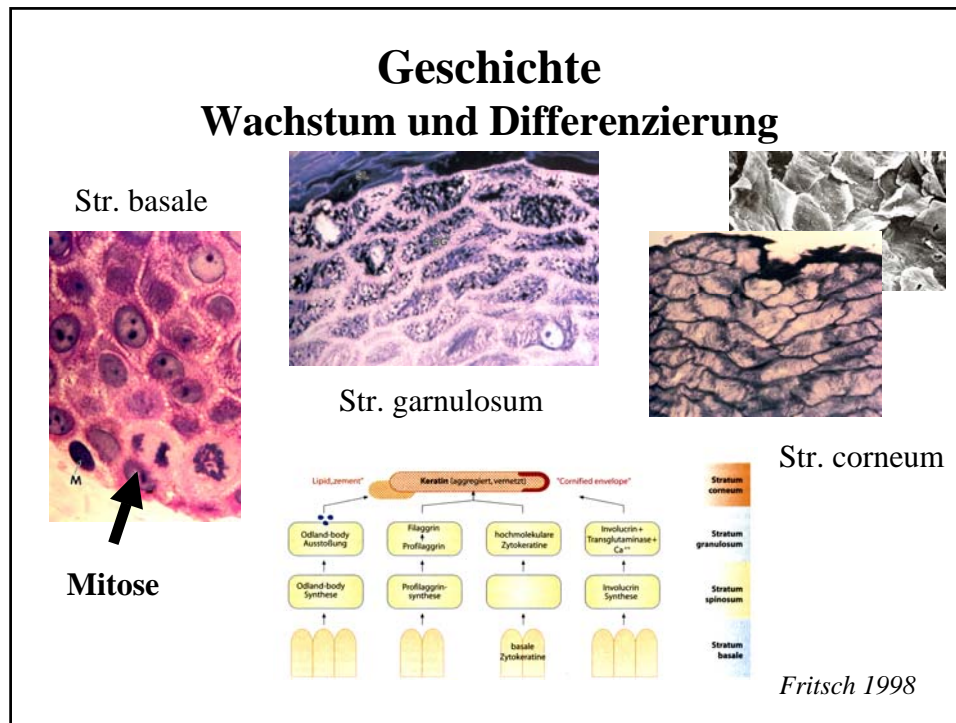
Die Haut als sinnliche Grenze

Winfried Neuhuber
Anatomisches Institut
Universität Erlangen-Nürnberg



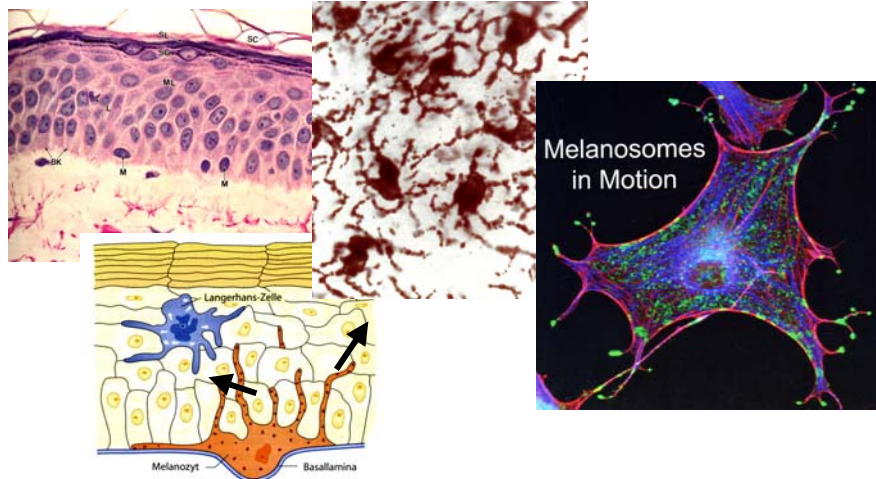
Haut und Sinne
-
klassische Einheit



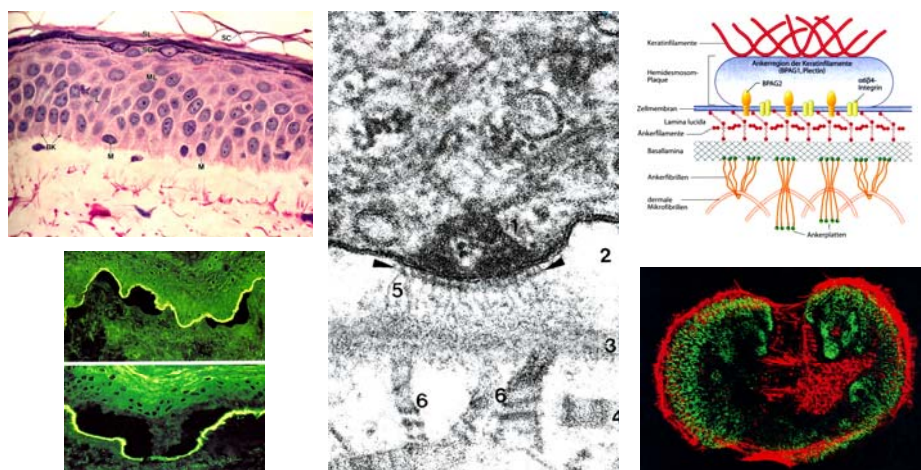


Grenze und Schutz

Melanozyten

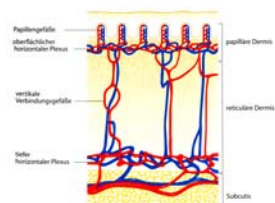
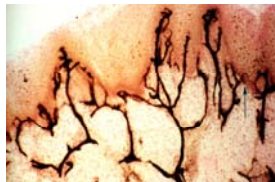


hinter/unter der Grenze: dermo-epidermal junction

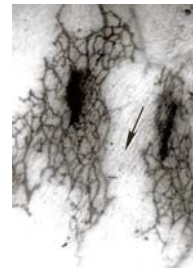
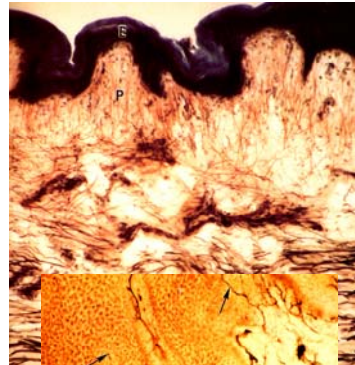


Hemidesmosom

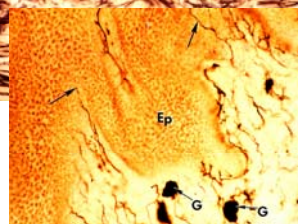
Dermis = „Kettenhemd“ Interface zwischen Epidermis und Organismus



Blutgefäße



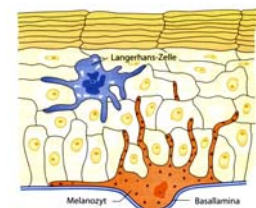
Lymphgefäße



Nerven

Sensibilität I Haut und Immunsystem

Langerhans-Zellen



Mastzelle

